

Bloodworks (Live Blood View)

Frequently asked questions

- [What is it?](#)
- [What's the process of taking the "drop" like?](#)
- [What kind of things can one see from the blood?](#)
- [Time allocation](#)
- [Instant effect](#)
- [How long does the effect last?](#)
- [Frequency](#)

[In a
nutshell](#)



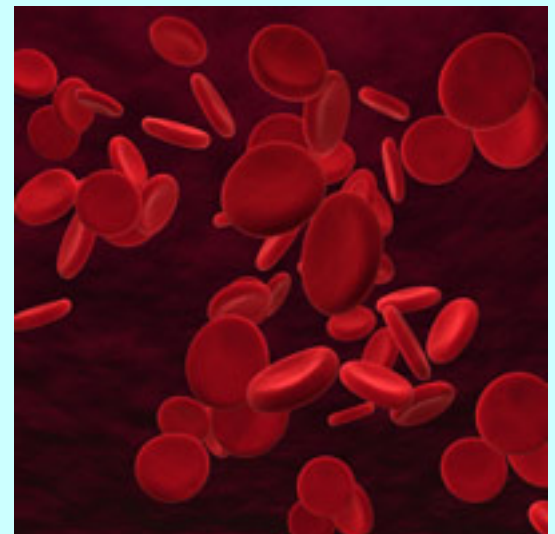
What is it?

Live Blood View involves the examination of a fresh drop of your living blood under a high-power video-microscope which projects the visual image onto a computer screen using different modes: dark field, bright field and phase contrast. Your consultant will show you different features of your blood to you and interpret them for you. You will also get the CD with the stills of your blood.

What's the process of taking the "drop" like?

The process itself is quite simple. A drop of blood is taken from your finger by a single-use finger lance (similar to the ones you can get in Boots) and placed on a microscope slide for viewing. The image from the slide is transmitted to a computer monitor so you can observe along with your practitioner what the blood cells are revealing. The procedure allows the direct inspection and interpretation of over fifty possible features of the bloodstream, red blood cells, and white blood cells.

What kind of things can one see from the blood?



It is an excellent means of viewing by microscope the red blood cells, various types of white blood cells, platelets, and blood plasma, just as they function in the body. The presence of yeast, fungi, parasites, bacteria active somewhere in the body, damaged cells, cholesterol

crystals, and uric acid crystals can be easily identified. The size and shape of the red blood cells may indicate stress levels, nutritional deficiencies, digestive problems, absorption problems, and the damaging effects of free radicals. Organ malfunction is also evident in the live blood cell view.

You may find out why you are feeling tired, worn out, bloated or why you can't fall asleep at night, and more importantly, how to change it!

Time allocation

The initial Live Blood View consultation will last 90 minutes, the repeat consultation will last about 40 minutes.

Instant effect

It's a visual medicine tool – you will see if you are stressed, eating or drinking too much, having free radicals damage, or the opposite – you are better than you may have thought! A picture, as they say, speaks a thousand words, and is hard to forget. Some people commit themselves there and then to making changes, and stick with their commitment.

How long does the effect last?

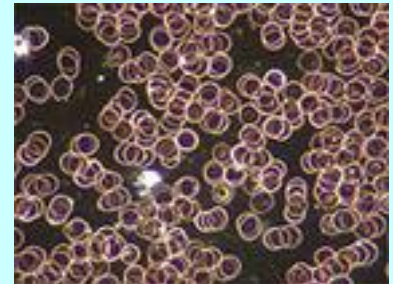
For as long as you are conscious of the need to make certain changes in your lifestyle and nutrition and are making them.

Frequency

The consultant will give you the idea of when you need to come, but usually we ask you to make the necessary changes for at least a couple of months before coming back.

In a nutshell

By watching your blood under the microscope and discussing what you see with the consultant, you can observe:



- The conditions of the red blood cells, white blood cells and platelets, and what it could mean for your health.
- Whether you are nutritionally deficient, and whether there are any indications of inefficient absorption and assimilation.
- Features associated with blood sugar imbalances.
- Features associated with cholesterol, triglycerides and uric acid.
- Free radical activity and cellular oxidation.
- The presence of possible microbial activity such as bacteria, yeast, parasites, fungi.
- Levels of toxicity and internal pollution.
- Features and early warning signs associated with degenerative conditions.

The consultant will recommend some nutritional and lifestyle adjustments and may be specific supplementation.

We suggest that you follow these recommendations and repeat the procedure three to five months after the original assessment.

† [Back to the top](#)

Information Provided by
Wellbeing Now
17 North Town Road, Maidenhead, Berkshire SL6 7JQ
© Wellbeing Now, 2007
<http://www.wellbeingnow.co.uk/live-blood-view.html>